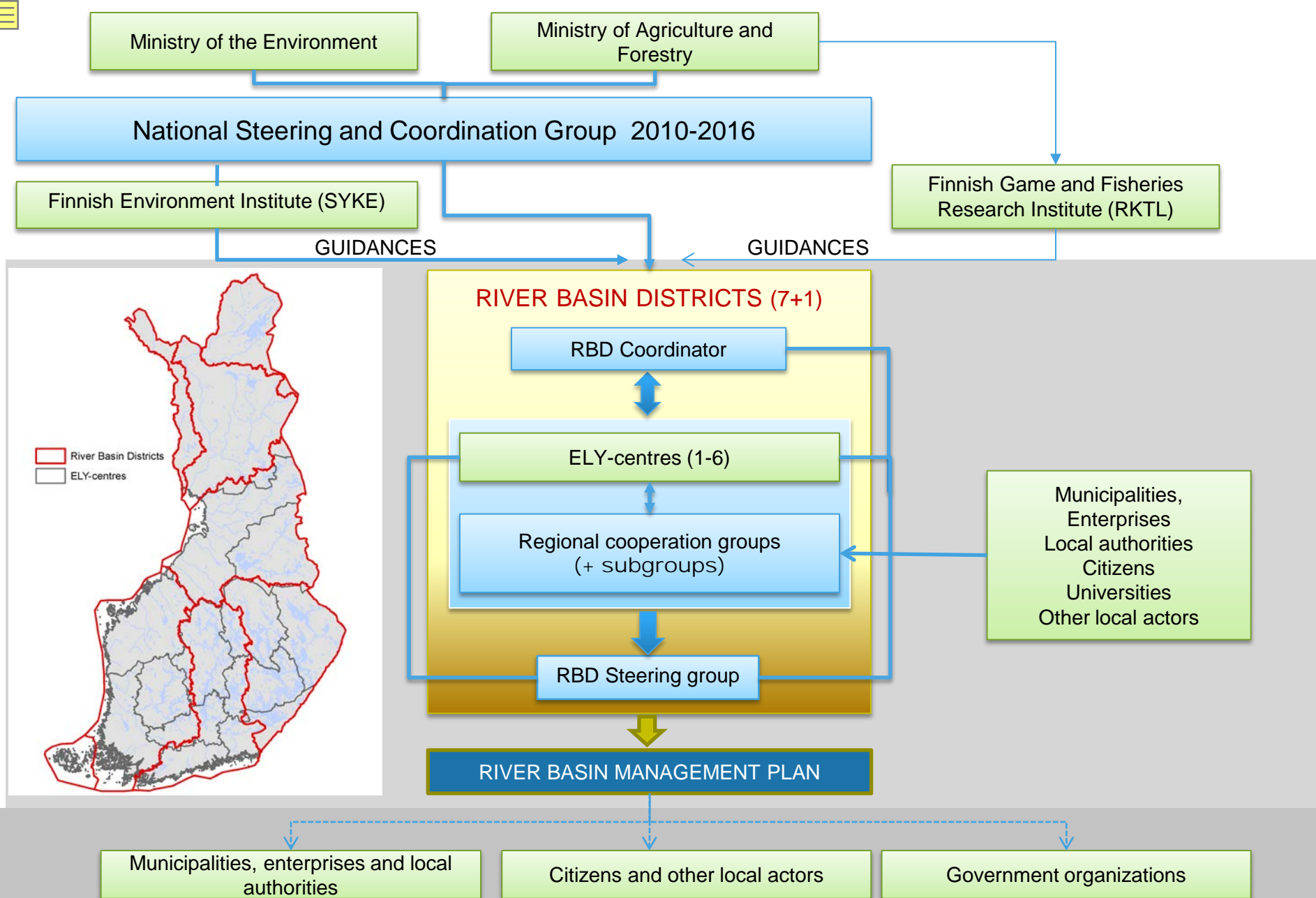


Present status of WFD work in Finland

Antton Keto
WFD conference in Oulu
19th of March 2014

Content

- Governance issues
- Timetables
- Progress of 2nd planning cycle
- Commission assessment of Finnish RBMP's



Organization and collaboration for 2nd cycle

- Steering group for RBMP planning
- National Coordination Group for RBM planning
- National Coordination Group for WFD data Management
- National Coordination Group for Flood Risk Management
- National Coordination, Expert and PoM group for Marine strategy implementation

Steering group for RBMP

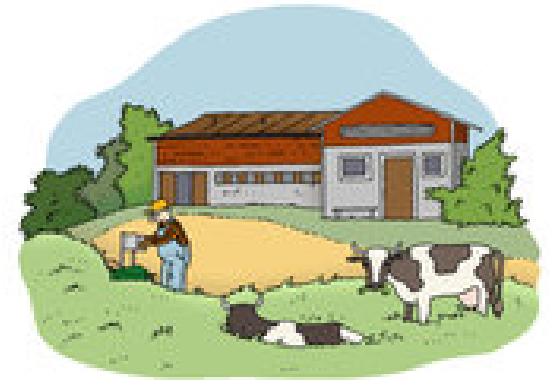
- Members: representatives from different ministries
 - Financing, Transport, Agriculture and Forestry, Environment, Employment and Economy
- Main tasks:
 - Integrate RBMP Implementation to existing practises
 - Implement policy measures
 - Follow up implementation process in general

National Coordination Group for RBMP

- Members: representatives from ministry of Environment and Ministry of Agriculture and Forest, competent coordinative authorities and representatives from SYKE
- Main tasks:
 - Support to RBMP Implementation
 - Accommodate flood risk management, marine strategy and climate change
 - Support to data management, monitoring systems and reporting
 - Communication and training
 - Guidance's

RBMP timetable 2011-2015

		2011	2012	2013	2014	2015
Process	Work		Consultation (1.+2.)		Consultation (3)	
		Data systems for 2 nd round	Water bodies Typology Classification HMWB's	Monitoring Human impacts Measures Economic analysis	POM and RBMPs	POM and RBMPs ready Reporting
National	Regional		Wb's			
			Classification and monitoring	Classifi- cation	Monito- ring	
Regional	Work		SWMI and human impacts			
				POM and RBMP revision		Finalising
National	Regional	Programme for implementation of RBMP Updating the data systems	EU-reporting: implementation of measures			
		Regional implementation	Data input		Assessment of 1st cycle until 2015	Data input



Progress of 2nd Planning Cycle



Changes in water bodies

- All lakes larger than 1 km² (5 km²)
- All rivers, basin area larger than 100 km² (200 km²)
- No changes to delineation of coastal areas
- New water bodies
 - improve integrity of river systems
 - must be significant

Type of new water body	Number	% of total
Divided	46	0,7
Combined	8	0,1
Delineation fixed	226	3
New	633	9
No changes	5878	87
TOTAL	6791	

Pressure assessment

Was
used in
the 1st
cycle

VEPS

- An assessment tool included in the environmental data system of SYKE (HERTTA)
- Calculates loading from point sources, agriculture, forestry, natural background leaching, atmospheric deposition, peat mining, scattered settlements and urban storm waters
- 3rd order catchment –scale
- Agricultural loading based on ICECREAM (P) and SOIL-N (N) models

VEMALA

- A water-quality module of the water simulation and forecasting system (WSFS) of SYKE
- Calculates TSS, total P and total N loading at 1-day time step basically in every catchment of Finland
- Is constantly calibrated against water quality data of HERTTA
- Can be used for detection of suitable locations for constructed wetlands

has been
used for the
2nd cycle

Joint use of the models

- Nutrient loading estimation model
VEMALA
- Lake Load Response (LLR) model for
ecological impacts
- KUTOVA-tool for selecting the cost-
effective mitigation measures
- VIRVA model for estimating the
recreational benefits of the improved water
quality

National guidance to improve the planning in the 2nd cycle

- Guidance related to different (76) planning stages, the tasks in these phases are described
- Sectoral guidance for municipalities, agriculture, forestry, groundwater, hydromorphol. measures, peatland production etc.)
- The set of measures and policy instruments
 - Assessment of the costs, social impacts, effectiveness, financing instruments, responsibilities in implementation, follow up and monitoring
- Horizontal guidance
 - Environmental objectives and exemptions
 - National Guidance for the application of Article 4.7 has been developed
 - Assessment of climate change impacts and adaptation in the RBMP's
 - The consideration of chemical impacts (later)

The measures and policy instruments in the 2. cycle

Sector	Measures in the 2. circle	Policy instruments
Agriculture	16	20
Forestry	9	11
Municipalities and rural areas	15	9
Peat production	14	8
Ground water and spoiled soils	36	20
Restoration of water bodies	12	11
Acid soils	5	7
Fur production	9	5
Industry	3	5
Aquaculture	4	5
Total	111	101



EU Commission's assessment of Finnish RBMP's



Feedback from the Commission

- Ensure legislation guarantee that permit granted under other legislation do not undermine the WFD objectives
- More information on compliance of current monitoring of HyMo quality elements
- Methodology of Classification, especially the role of expert judgment
- Information on natural background concentrations of Cadmium
- Actions to ensure that the monitoring network meets the requirements of the WFD
- Consider reviewing EQS for river basin specific pollutants

Feedback from the Commission

- Clarify requirements for protected habitats and species dependent on water, especially GW dependent terrestrial ecosystems and bird lakes
- Clarification on the grounds for exemptions (technical unfeasibility and natural conditions)
- Further information on exemptions and measures related to surface and ground water drinking water protected areas
- Information on how PPP is implemented in lake restoration projects
- Report how to link better Nitrate Directive and WFD
- How to address the gap in agricultural basic measures
- How CAP funding will be targeted once the approach is clarified

Feedback from the Commission

- How hydromorphological impacts and compensations are dealt with water act
- Determine N reduction of nutrients from urban waste water to achieve WFD objectives?
- Better linking of the analysis of pressures and impacts with the determination of measures
- Defining ecological flow and measures to apply it to existing hydropower

A wide-angle photograph of a calm lake under a clear blue sky. In the distance, a low-lying forested island is partially obscured by a light mist or fog. To the right, a larger, more prominent island with dense green trees and some reeds is visible, its reflection clearly mirrored in the still water. The overall atmosphere is peaceful and natural.

THANK YOU!

www.ymparisto.fi/vesienhoito